

# Graduate Diploma in Systems Analysis (GDipSA)

## Aptitude Test Sample

All GDipSA applicants are required to sit for the aptitude test. This is a test to measure your aptitudes for learning and performing the job of computer programming and systems analysis. There are five parts to the test and each part will be timed separately - Verbal Meaning, Reasoning, Letter Series, Number Ability, and Diagram Ability. It is designed to test your problem-solving ability, your ability to read and understand diagrams, etc. You can't really study for the test. It is designed to test what abilities you have, as opposed to testing what facts or information you know.

### Sample Questions

#### *Verbal Meaning*

Each item in this part of the test presents a word, followed by five alternatives. You are to choose from the five words the one that **means the same** or **most nearly the same** as the word at the beginning. You will be given nine minutes to complete thirty-eight questions.

*Sample question: Recipient*

1. donor
2. borrower
3. sponsor
4. receiver
5. lender

*Answer: the word **recipient** means the same as **receiver**.*

#### *Reasoning*

This is a test of your ability to reason and to express problems in a simple form using conventional mathematical symbols. The items in the test require you to read a problem and formulate an answer for it. You will be given twenty-two minutes to complete twenty-four questions.

*Sample question: A new homeowner ordered an air-conditioning system which costs  $A$  dollars, six wardrobes which cost  $W$  dollars a piece, and a dozen beds which cost  $B$  dollars each. The total cost of the order is*

1.  $A + W + B$
2.  $AB + 6W$
3.  $A + 6W + 12B$
4.  $A + (W + B) / 2$
5.  $A + (2W + B)6$

*Answer: 3*

## Letter Series

In this part each problem presents a series of letters arranged accordingly to a pattern. You are to find the pattern in the series and decide which of the five letters given should come next. You will be given twelve minutes to complete twenty-six questions.

Sample question: *a e i m q u \_*

1. *s*
2. *t*
3. *y*
4. *v*
5. *w*

Answer: 3. The letters progress by four; the next letter should be “y”.

## Number Ability

This test measures your ability to make rapid numerical calculations and estimates. You will be given seven minutes to complete twenty-eight questions.

Sample question:  $123.4 \div 1/10$  (approximate)

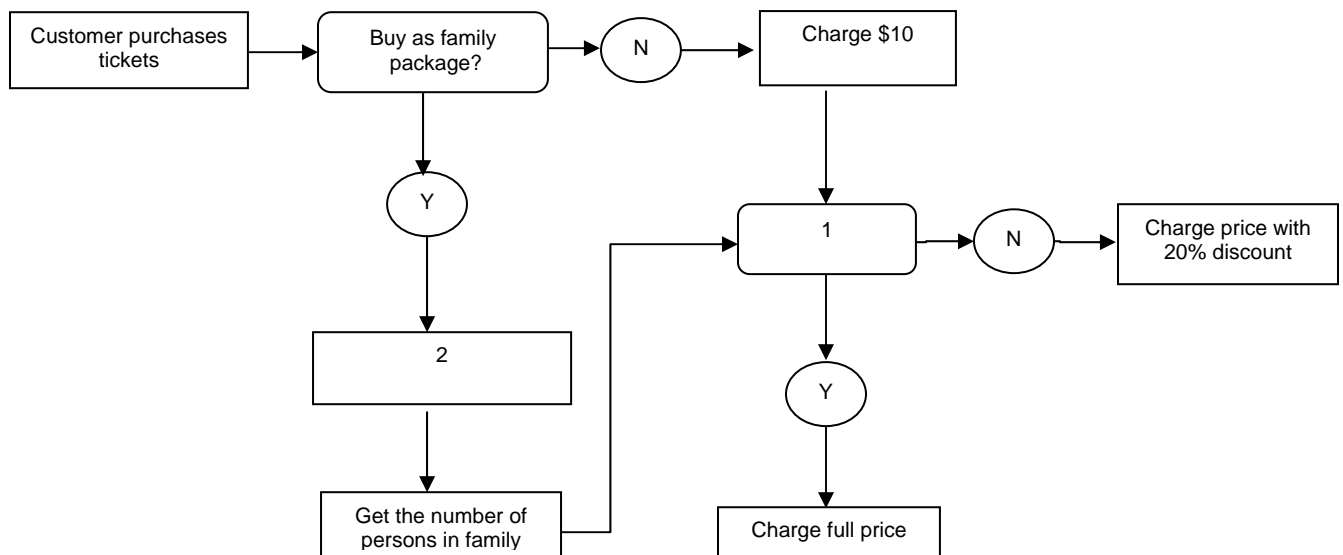
- a) 1.2
- b) 12
- c) 120
- d) 1200

Answer: d

## Diagramming

In this section there are a number of problems with flow charts (schematic diagrams) that illustrate the process by which each problem is solved. The solution to a problem is illustrated in its diagram by following the arrows from cell to cell. You will be given thirty-five minutes to complete thirty-five questions.

Sample question:



*Problem and conditions*

- A. A themepark has decided to charge their entrance fee by individual or family package.
- As individual, ticket will be sold at \$10 per person
  - As family, ticket will be sold at \$8 per person
- B. There is also a difference in the fee based on the entry time into the park.
- Entry to theme park before noon will be charged at the full price
  - Entry to theme park after noon will be charged the normal price with a 20% discount

**Cell 1.**

- A. Is the entry before noon?  
B. Is the entry after noon?  
C. Customer purchases individual ticket  
D. Customer purchases a family package  
E. Customer makes payment

**Answer: A**

**Cell 2.**

- A. Charge \$10 per person  
B. Charge \$10 with 20% discount per person  
C. Charge \$8 per person  
D. Customer makes payment  
E. Check the time of entry

**Answer: C**